



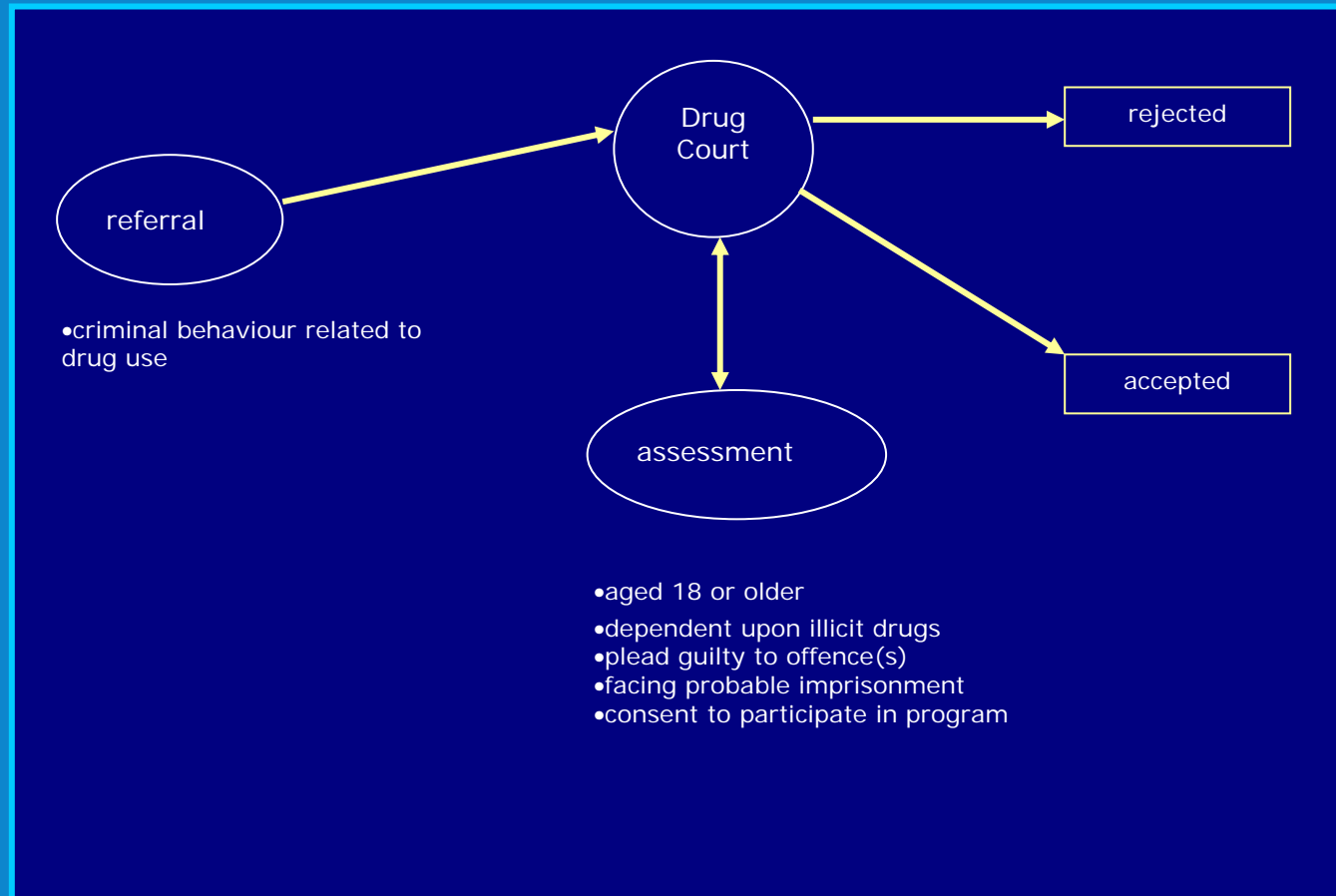
Government of South Australia
Department of Justice

office of crime statistics and research

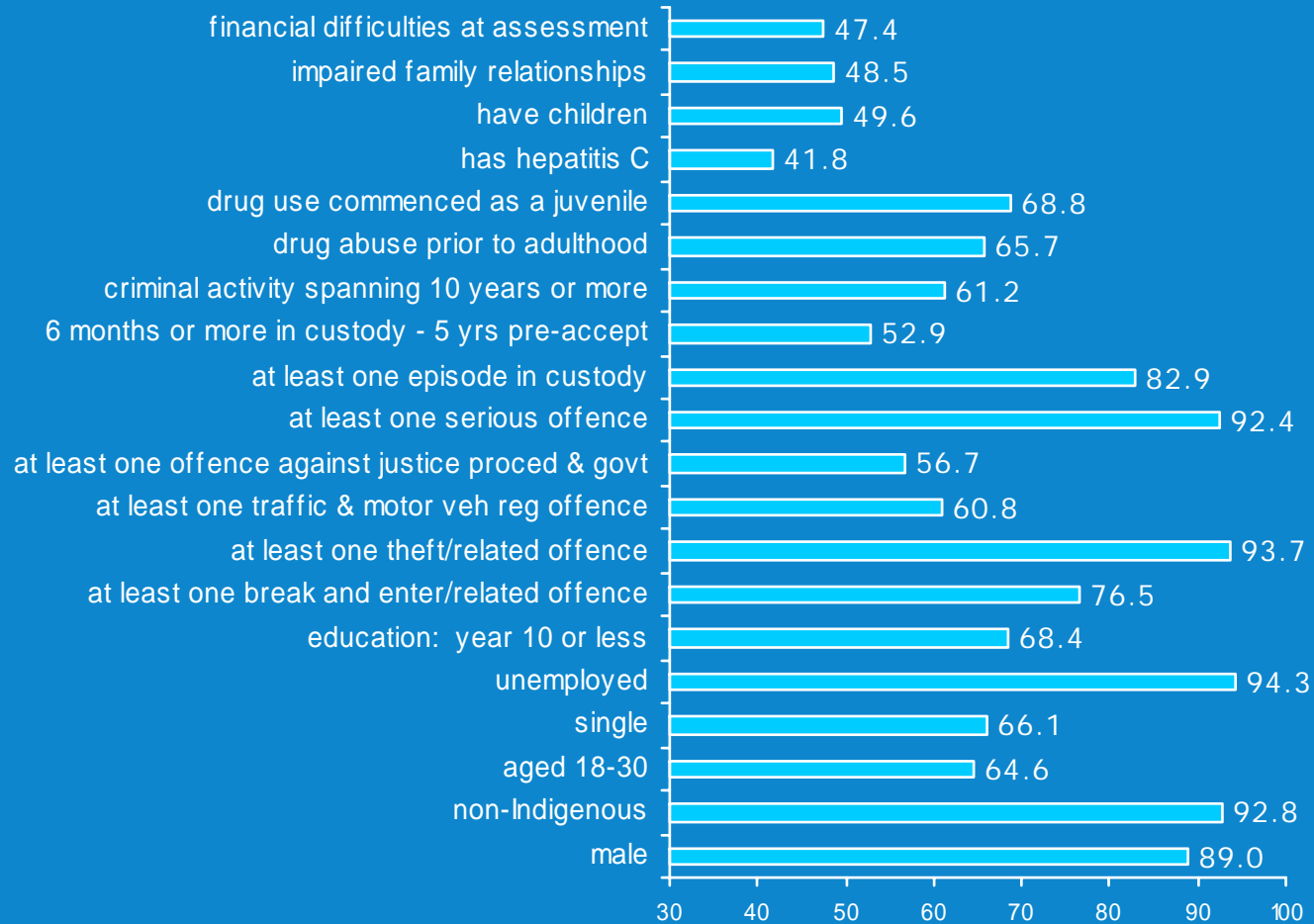
South Australian Drug Court Summary of Findings

Grace Skrzypiec

Drug Court

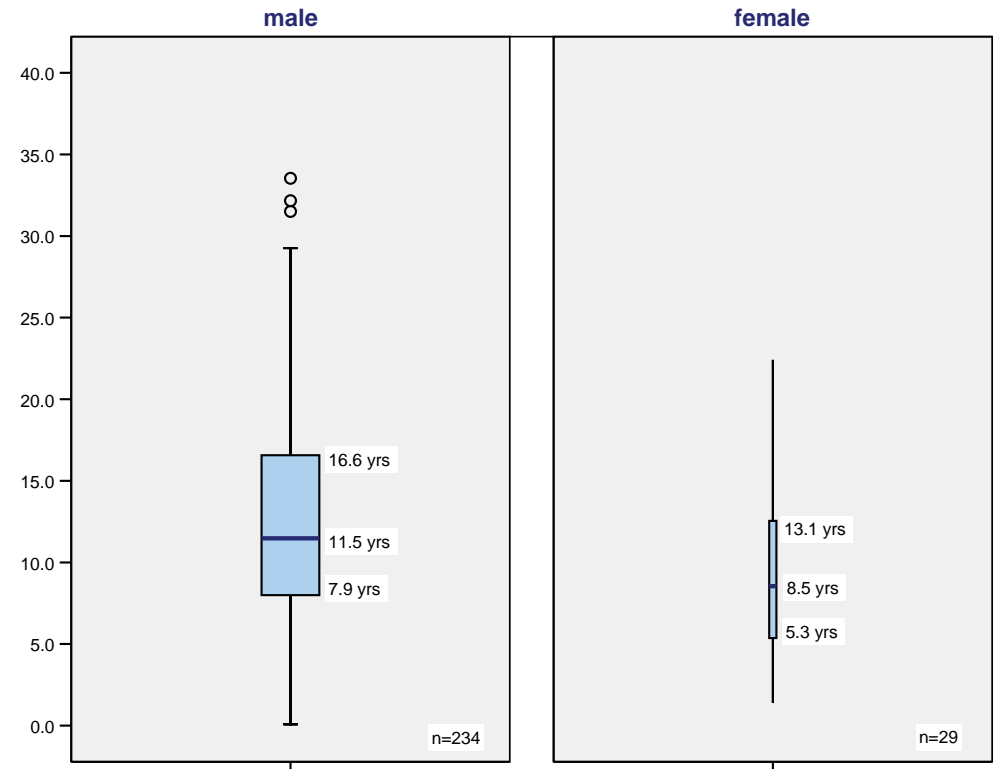
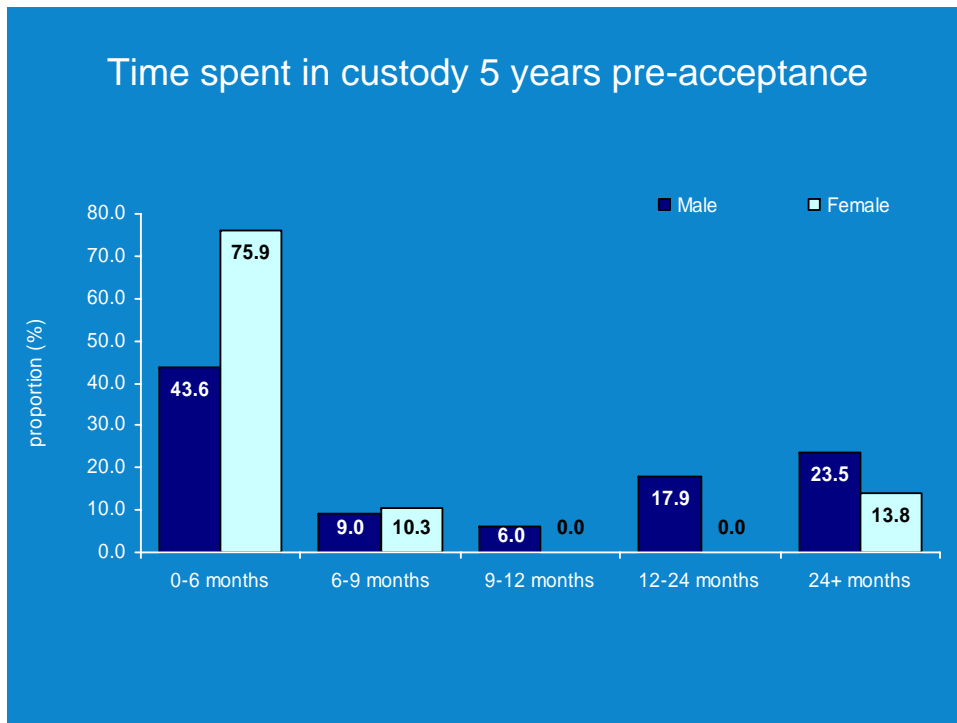


Profile of Participants



Gender Differences

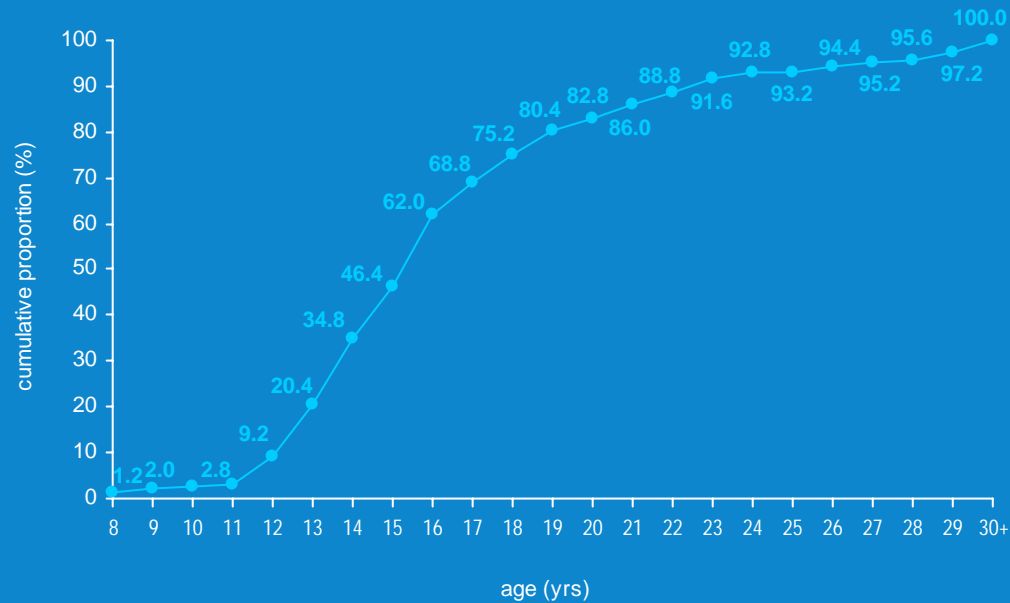
Span of Criminal Career



Drug Use History

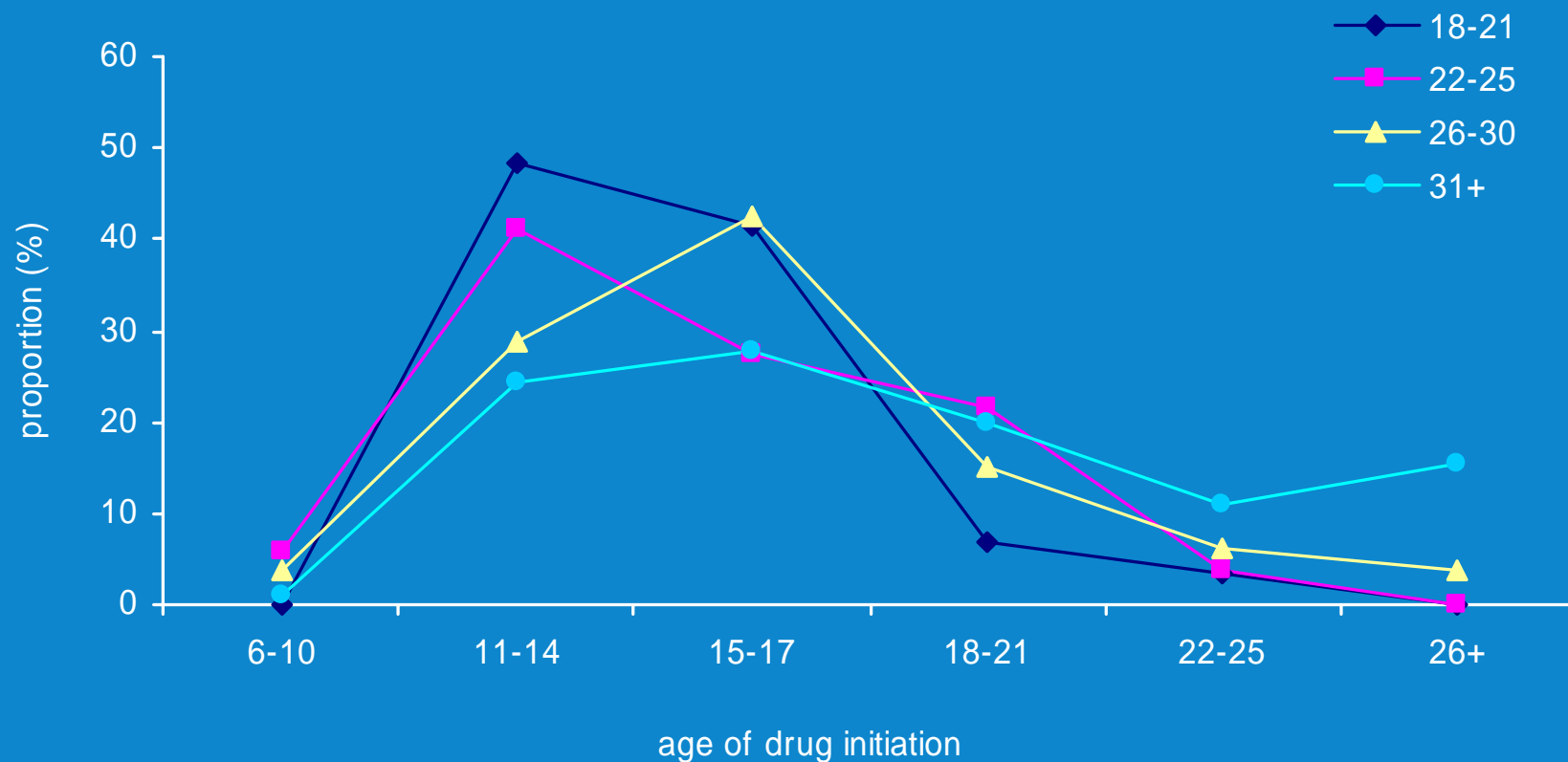
	No	Yes
Periods of drug abstinence greater than six months	87.7	12.3
Previous failed drug treatment	96.6	3.4
History of poor compliance with treatment	98.9	1.1
Drug abuse prior to adulthood	34.3	65.7
Alcohol abuse prior to adulthood	70.1	29.9
Experienced overdoses	70.1	29.9
Lack of insight into their drug use behaviour	96.3	3.7

Age of Self-Reported Drug Use Initiation

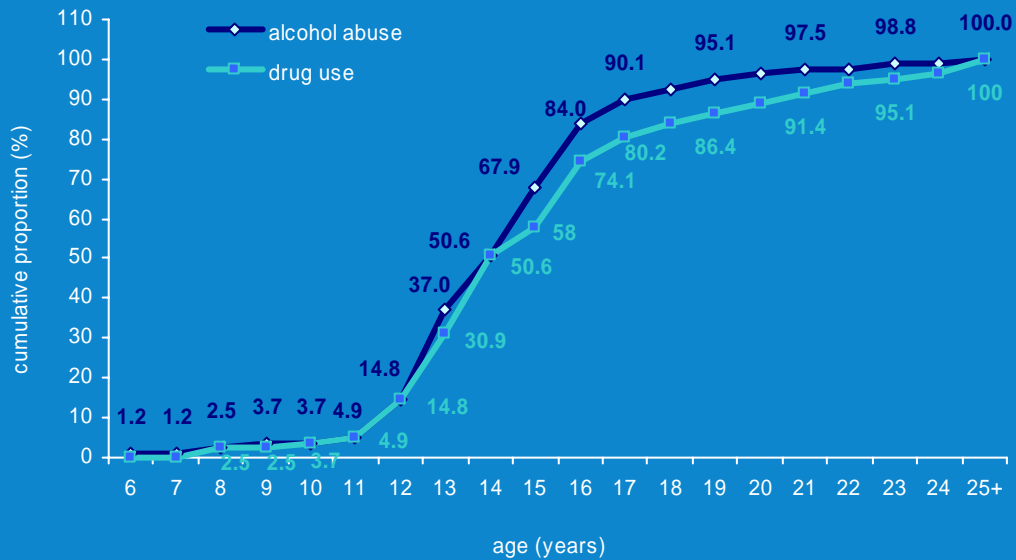


Age (yrs)	Number	Percent
8-12	23	9.2
13-15	93	37.7
16-17	56	22.4
18-20	35	14.0
21-30	37	14.8
31+	6	2.4
Total	250	100.0

Age at Acceptance by Age of Drug Use Initiation



Age of Self-reported Substance Use Initiation

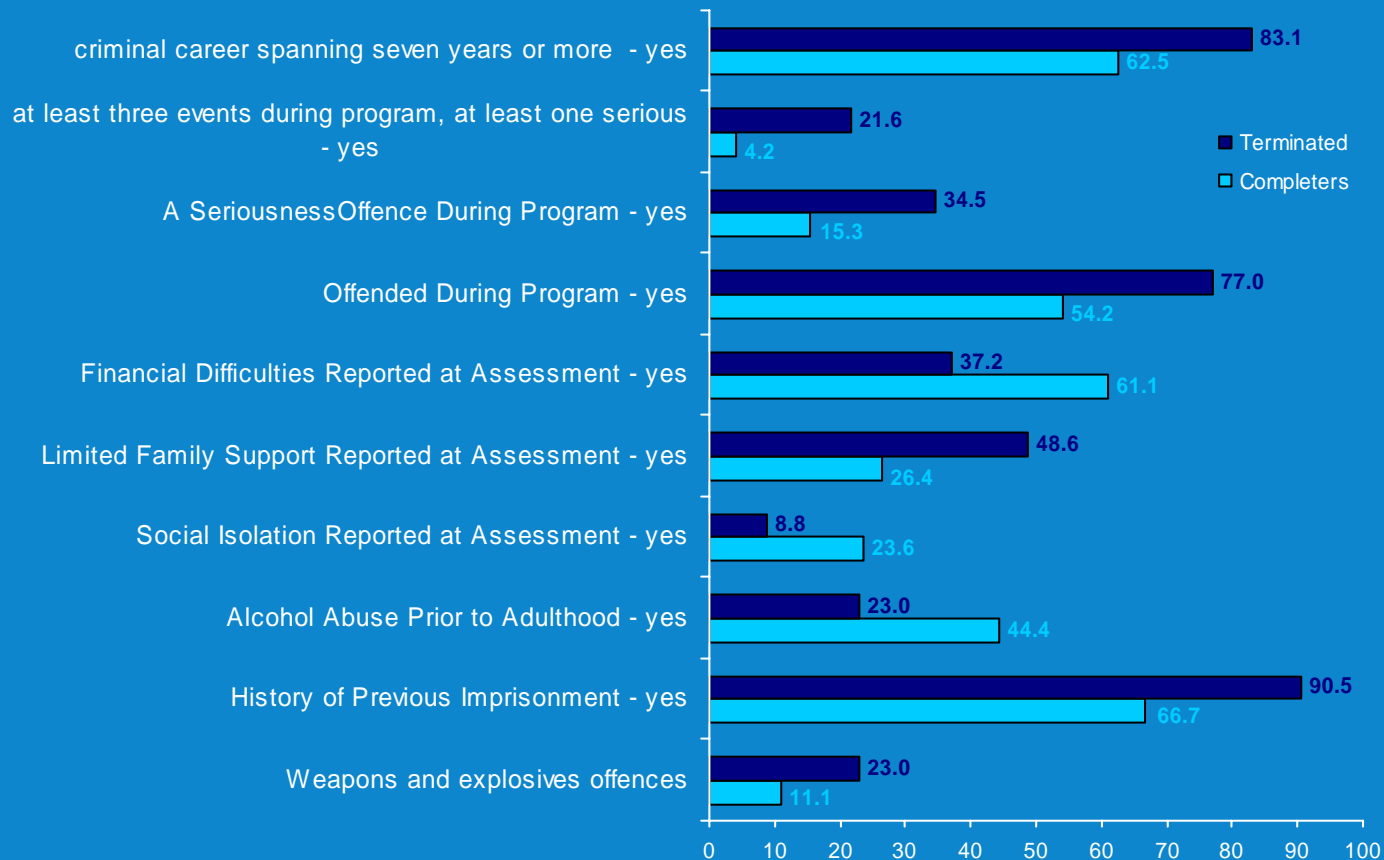


Age started	Alcohol Abuse	Drug Use
6-10	3.7	3.7
11-14	46.9	46.9
15-17	39.5	29.6
18+	9.9	19.8
Total	100.0	100.0

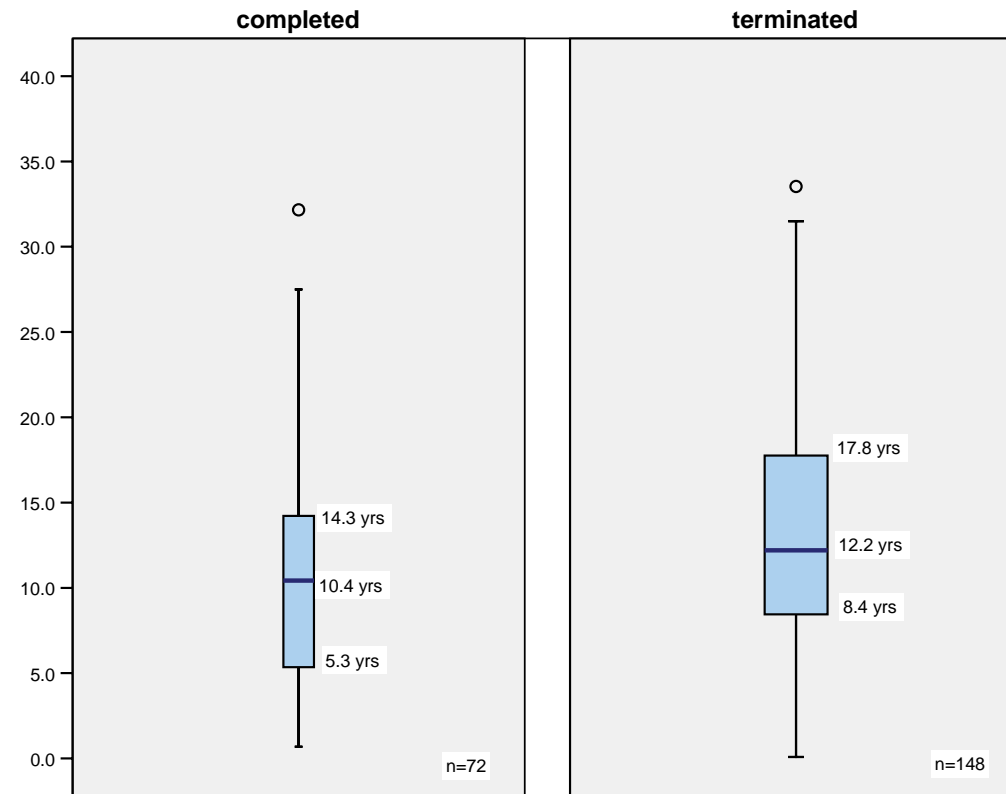
Outcome of Drug Court Clients: 2000-2003

	Number	Proportion (%)
Completed	69	26.2
Terminated	147	55.9
Withdrew	47	17.9
Total	263	100.0

Differences between Completers and Terminated

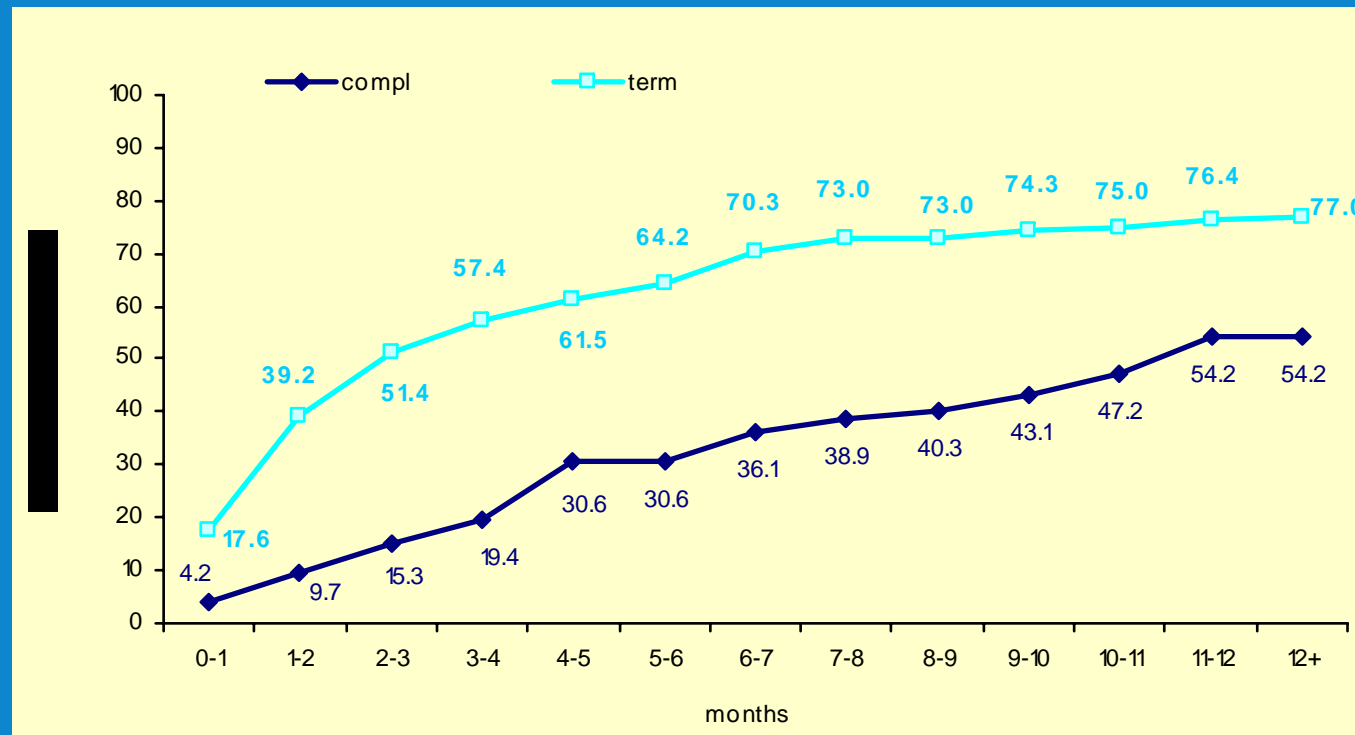


Span of Criminal Career



Offending During the Program

Time to first Offence



Predictors of Drug Court Outcome

	B	S.E.	Wald	df	Sig.	Exp(B)
Limited Family Support	1.6	0.4	15.5	1	0.00	5.2
Abused Alcohol before Adulthood	-1.0	0.4	6.5	1	0.01	0.4
Span criminal career of 7 years or more	0.9	0.5	4.3	1	0.04	2.5
Constant	-2.3	-2.2	1.1	1	0.29	0.10

Note: R²=0.29 (Hosmer & Lemeshow), 0.30 (Cox & Snell), 0.42 (Nagelkerke). Model χ^2 (11) = 74.9, p<0.0001