

Working Together for a Safer London

Gerry Campbell
Metropolitan Police Service
New Scotland Yard



**METROPOLITAN
POLICE**

Working together for a safer London



To do nothing

Is not an

OPTION!



**METROPOLITAN
POLICE**

Working together for a safer London





Domestic Violence

‘Any incident of threatening behaviour, violence or abuse (psychological, physical, sexual, financial or emotional) between adults, **aged 18 and over**, who are or have been intimate partners or family members, regardless of gender and sexuality.’



METROPOLITAN
POLICE

Working together for a safer London



National Priorities

- Priority for all 43 forces in England & Wales
- Protect the lives of adults & children at risk
- Investigate all allegations of domestic violence
- **Hold abuser accountable for their actions**
- **Adopt a pro-active multi agency approach to prevention & reduction**

UK

National
Policing Plan
ACPO

Greater London Authority
London Domestic Violence Strategy
MPA / Criminal Justice Board

Metropolitan Police
Policing & Performance Plans
Public Protection Groups

*Centrally
Driven*

*Locally
delivered*



**METROPOLITAN
POLICE**

Working together for a safer London

Domestic Violence

- “...one of the most pernicious denials of human rights because it is perpetrated not by strangers but by family members, people in positions of trust”.

Sir John Stevens

Former Commissioner, Metropolitan Police

Communicating our Strategy

- Internal - 'next time your 'just a domestic' is a murder'.
- External – Offender focused 'your partners silence no longer protects you'



**METROPOLITAN
POLICE**

Working together for a safer London

next time, your
'just a domestic'



...could
be a
fatality

WHERE A POWER OF ARREST EXISTS YOU MUST BE PREPARED
TO JUSTIFY A DECISION NOT TO ARREST AN ALLEGED OFFENDER



METROPOLITAN
POLICE

Working for a safer London



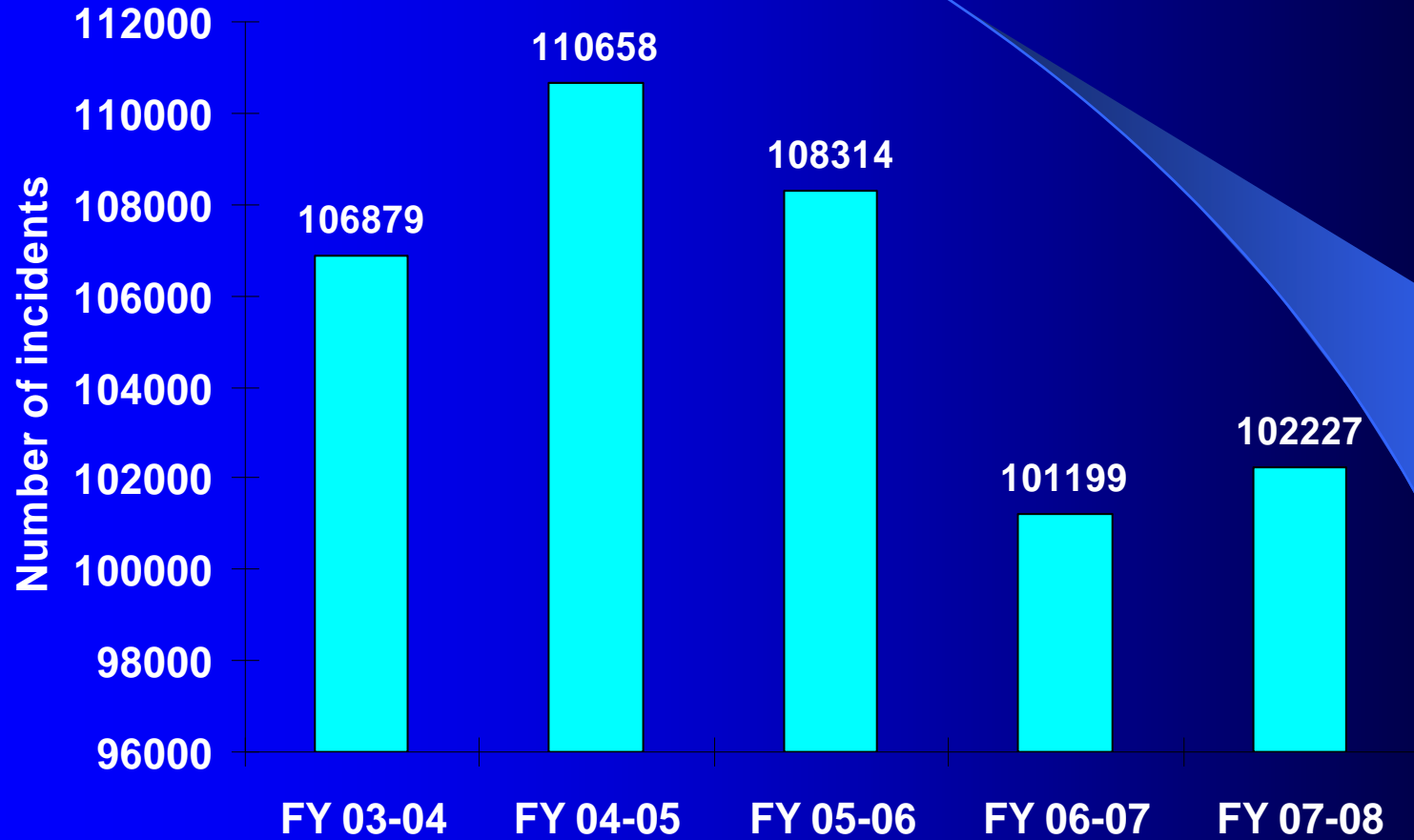
Key Principles

- Victim Support – keeping victims safe.
- Put the focus on back onto the Perpetrator.
- Leadership & Accountability
- Effective systems & processes
- Effective Partnership & Information Sharing
- Join up and ‘Can Do’ attitude

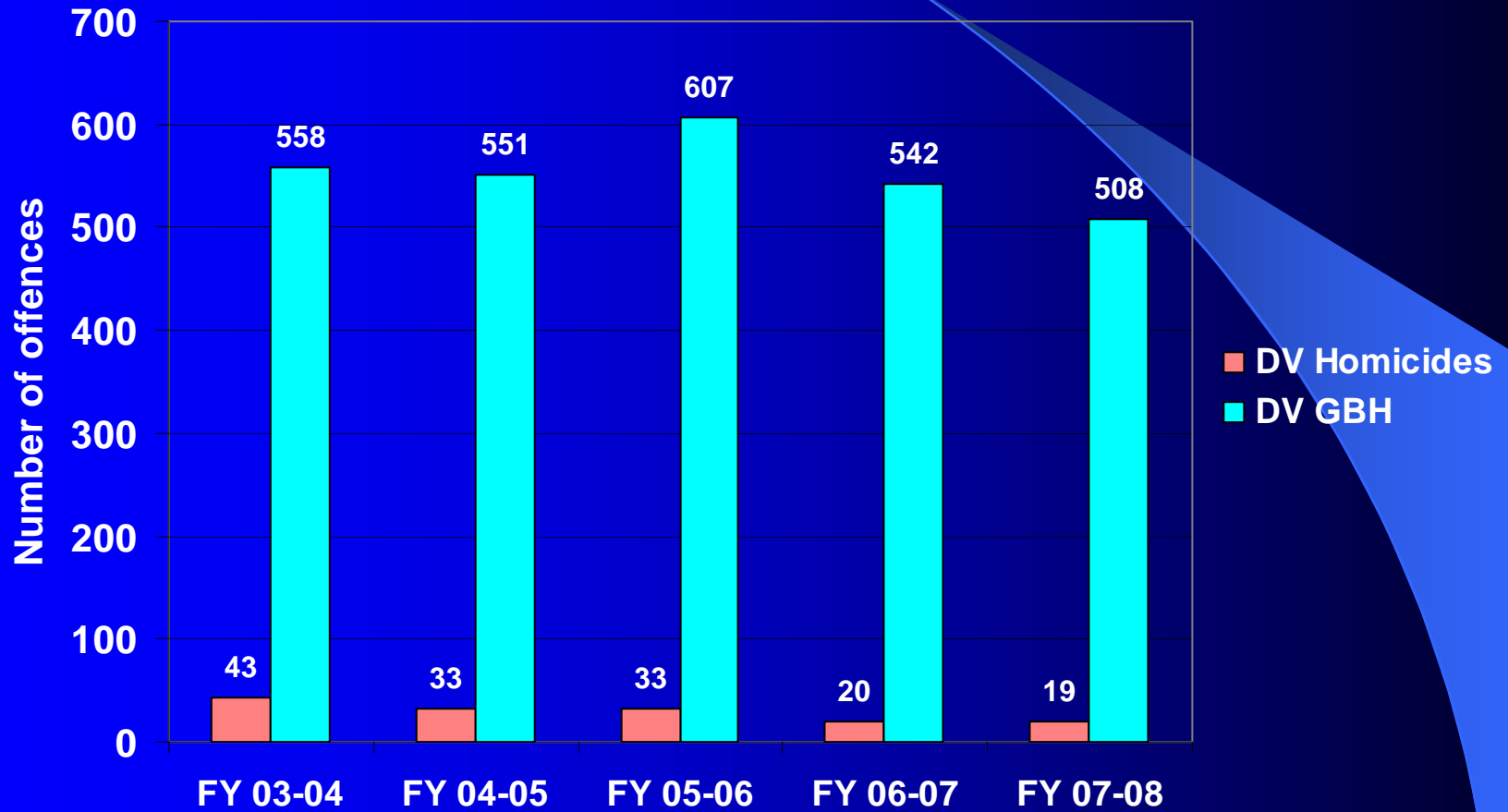
Prevalence

- 102,000+ reported incidents of domestic violence (crimes/non-crimes).
- 1 in 4 Actual Bodily Harm (ABH)
- 1 in 8 Grievous Bodily Harm (GBH)
- 10% of all homicide in London
- 24% of all violent crime in London
- 75% of all children on the Social Services 'at risk' register

DV Incidents Five Year Trends



DV Five Year Trends



Prevention not prediction!

Any investigation is a search
for the truth.



**METROPOLITAN
POLICE**

Working together for a safer London

Prevention

- Chief Officer support – Buy In.
- Homicide and serious case reviews
- Risk assessment model (SPECSS+) / Book 124D
- Borough & Central Daily Risk Management meetings
- Standard operating procedures & Positive Action
- CPS/MPS Service level agreement
- Mandatory Training
- Risk management panels (RAMP/MARAC/MAPPA)
- National Intelligence Model
- Violent Crime Directorate (Public Protection Command - 32 Borough Public Protection Groups)
- Police Authority oversight.



**METROPOLITAN
POLICE**

Working together for a safer London

The development of the Public Protection Command

Provides for the effective management of:

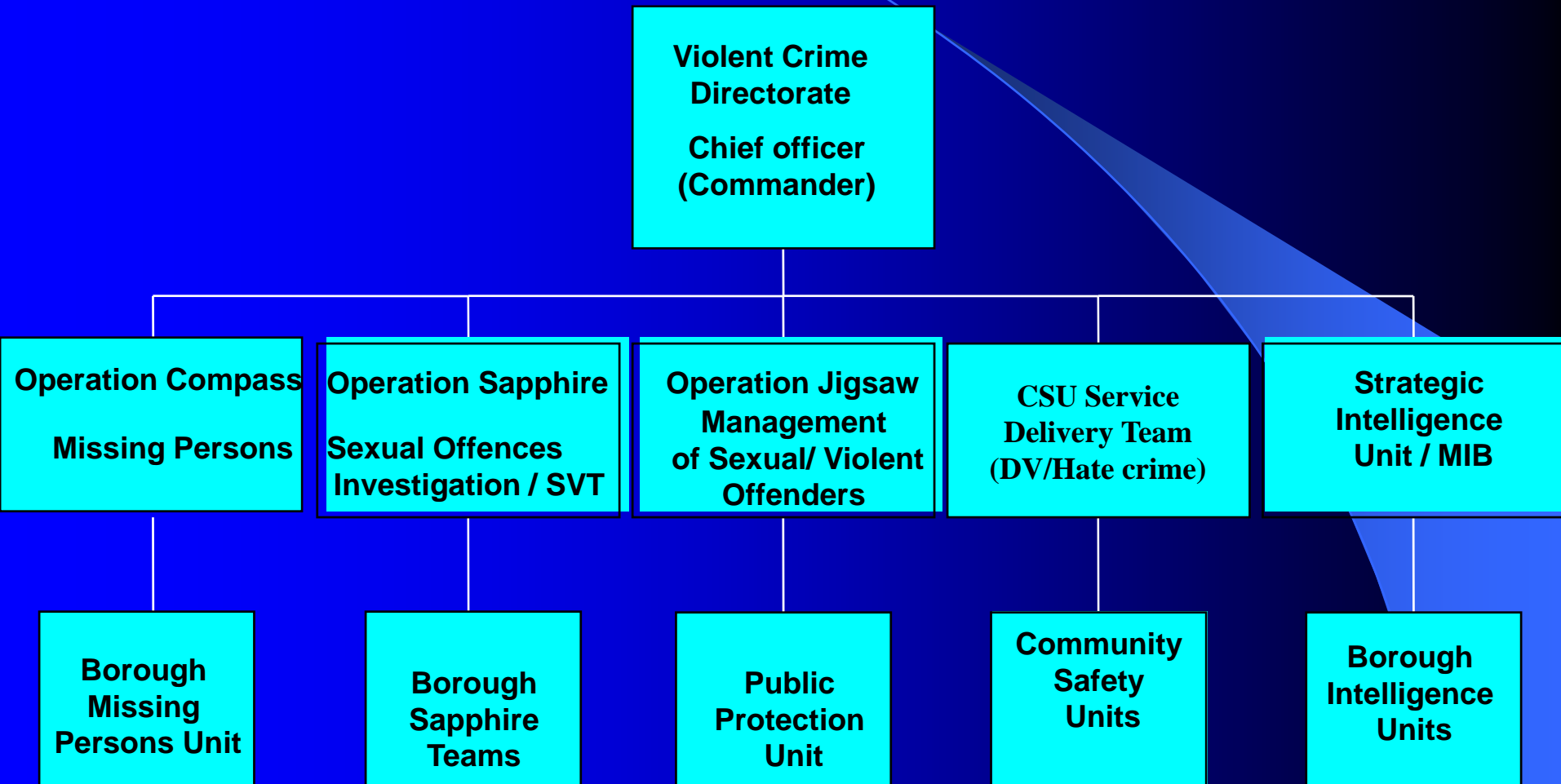
- **Dangerous People**
- **Dangerous Places (Public and Private), and**
- **Vulnerable Victims (Adults & Children).**

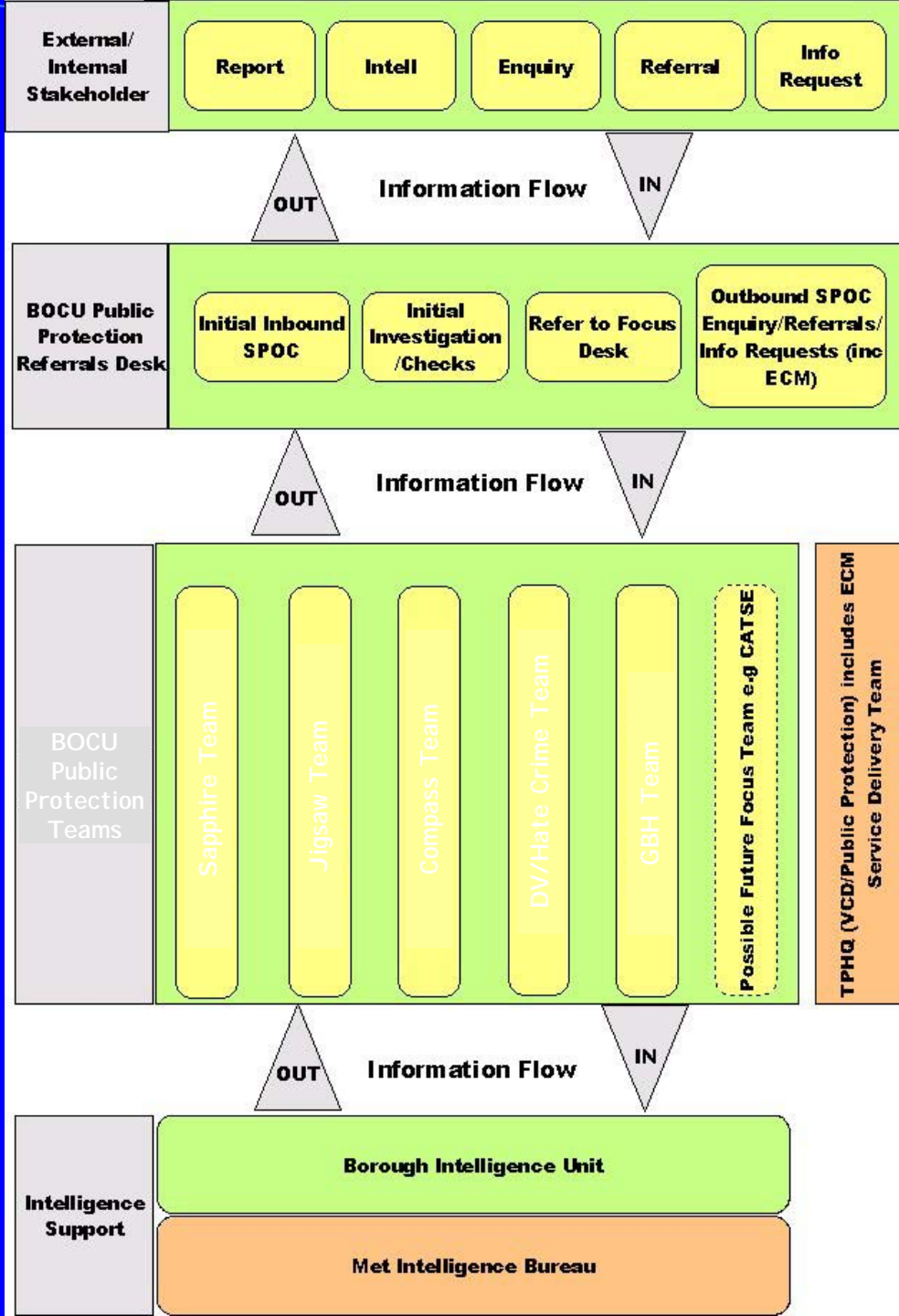


**METROPOLITAN
POLICE**

Working together for a safer London

Making the Links





Single TP Public Protection Unit Business Model



The key aims of the model are:

Rationalise and improve communication routes and intelligence flows between Public Protection units & stakeholders.

- **Facilitate improvement & formalisation of cross team intelligence and info sharing.**
- **Increase the size of taskable resources to public protection offences**
- **Scaleable structure to support possible future growth**



**METROPOLITAN
POLICE**

Working together for a safer London



DOMESTIC VIOLENCE ABUSERS ARE LOSING CONTROL

DOMESTIC VIOLENCE IS A SERIOUS CRIME.
THE MET CAN NOW PURSUE ABUSERS EVEN
WITHOUT EVIDENCE FROM THE ABUSED PARTNER..



If you know Domestic Violence is going on –
help us break the appalling routine of violence.

CALL YOUR LOCAL POLICE STATION.



HERE'S NEWS FOR DOMESTIC VIOLENCE ABUSERS: YOUR PARTNER'S SILENCE NO LONGER PROTECTS YOU.



**METROPOLITAN
POLICE**

Working for a safer London

Positive Action

‘..where an offence has been committed officers must arrest the suspect where there are reasonable grounds to suspect their involvement in the alleged crime. Failure to do so may result in neglect of duty. Officers must justify any decision not to arrest and clearly document that decision....’

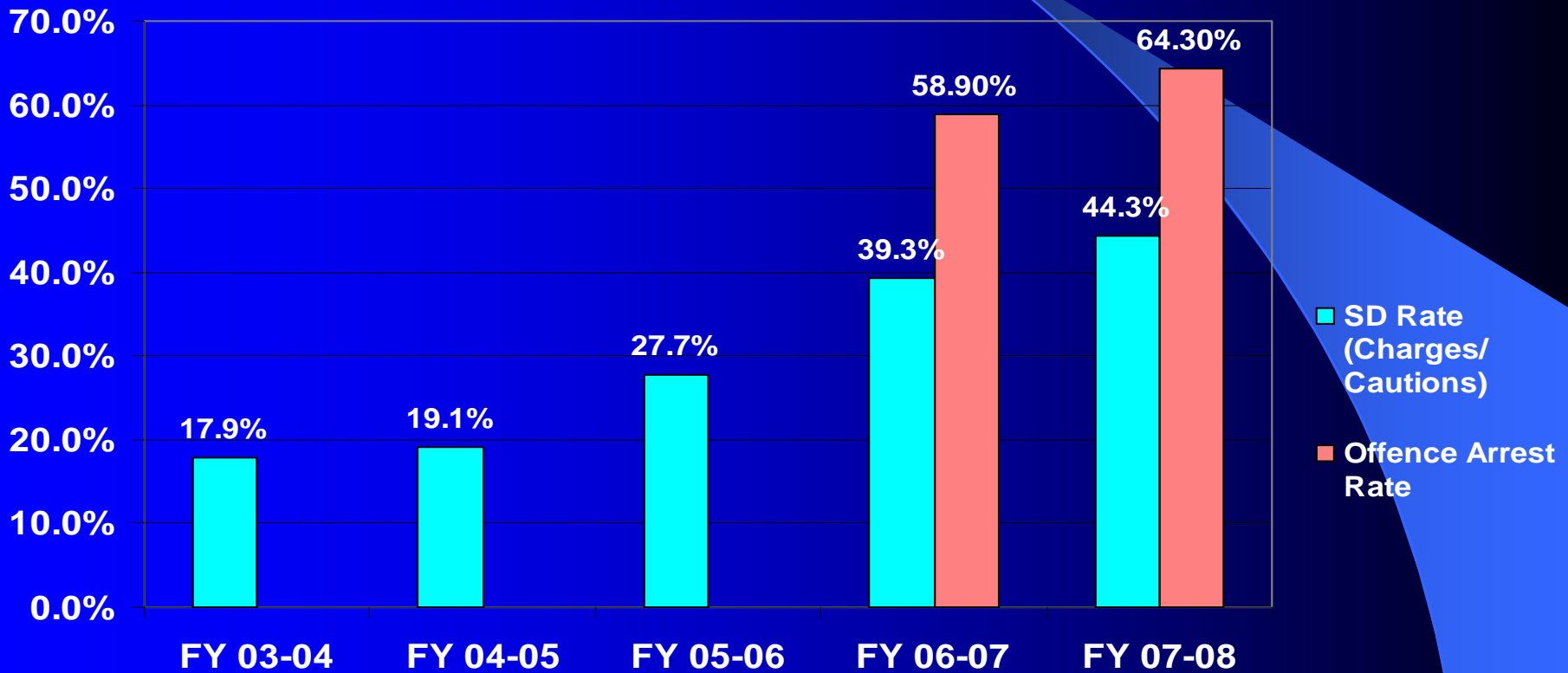
‘It is the officers decision to arrest and is not reliant on the victim’s willingness to support a prosecution’



METROPOLITAN
POLICE

Working together for a safer London

Five Year Trends for SD Rate and Offence Arrest Rate





RISK ASSESSMENT

Assess Identify Manage
2
PREVENT



**METROPOLITAN
POLICE**

Working together for a safer London



Aims & Objectives of RA

- To save life and reduce incidents of serious injury
- To identify and manage risk effectively
- To inform police decision making, including effective investigation and evidence gathering
- To prevent and reduce repeat victimisation



**METROPOLITAN
POLICE**

Working together for a safer London



DV RISK MODEL SPECSS+

- **S**eparation/child contact
- **P**regnancy / new birth
- **E**scalation
- **C**ommunity issues / isolation
- **S**talking
- **S**exual assault



METROPOLITAN
POLICE

Working together for a safer London

Sales

£m

20
15
10
5

**BIG
HITTER**



**HE HITS HIS PARTNER
EVERY NIGHT**

DOMESTIC VIOLENCE IS A SERIOUS CRIME
THE MET CAN NOW PURSUE ABUSERS EVEN
WITHOUT EVIDENCE FROM THE ABUSED PARTNER

If you know someone who is a perpetrator
they can face the opportunity cost of conviction

CALL YOUR LOCAL POLICE STATION

HERE'S NEWS FOR DOMESTIC VIOLENCE ABUSERS: YOUR PARTNER'S SILENCE NO LONGER PROTECTS YOU



Working for a safer London



+ Risk Factors

- **History of violence/stalking**
- **Mental health**
- **Credible threats to kill**
- **Weapon use**
- **Alcohol/substance misuse**
- **Children abused**
- **Pets abused**
- **Suicidal/homicidal tendencies**
- **Jealous, controlling behaviour**
- **Strangulation/choking**



**METROPOLITAN
POLICE**

Working together for a safer London



Risk Levels


- **STANDARD**
- **MEDIUM**
- **HIGH**





HE HITS HIS PARTNER EVERY NIGHT

DOMESTIC VIOLENCE IS A SERIOUS CRIME.
THE MET CAN NOW PURSUE ABUSERS EVEN
WITHOUT EVIDENCE FROM THE ABUSED PARTNER..

 If you know Domestic Violence is going on -
help us break the appalling routine of violence.

CALL YOUR LOCAL POLICE STATION.



Sales
£m
20
15
10
5
**BIG
HITTER**

HERE'S NEWS FOR DOMESTIC VIOLENCE ABUSERS: YOUR PARTNER'S SILENCE NO LONGER PROTECTS YOU.



Working for a safer London

RISK MANAGEMENT

- **R** – Remove (Arrest/remand, victim to safe housing I.e Refuge)
- **A** – Avoid (Civil injunctions, mobile phone, bail conditions,)
- **R** - Reduce (target hardening, mobile phone, referral to RAMP/MARAC)
- **A** – Accept (All options above refused by victim)



Emerging findings

- **Increased arrests**
- **Improved standards of investigation**
- **Charges increased**
- **Compliance with positive action through CJS**
- **Improved recording of intelligence**
- **Better risk identification and intervention**
- **Sharing of information between agencies**
- **Support and safety planning for victims**
- **Monitored and targeted perpetrators**
- **Reduction in homicide, rape, serious violence and repeat victimisation**



**METROPOLITAN
POLICE**

Working together for a safer London

Risk Management Fora

- **Multi-Agency Public Protection Panel**
- the high level group which manages the 'critical few'
- **Multi-agency PPO Scheme (volume crime)**
- **Multi-Agency Risk Management Conference (MARAC) – High / Very high Risk DV cases.**

MARAC

In a single [multi-agency] meeting, the DV MARAC combines up to date risk information with a timely assessment of a victim's needs and links those directly to the provision of appropriate services for all involved in the DV case: Victim, Children & Perpetrator.



METROPOLITAN
POLICE

Working together for a safer London

A MARAC aims to:

- Share information to increase safety , health and well-being of victims – adults & children
- To determine if the perpetrator poses significant risk to any Particular individual or to the general community
- To construct and implement a risk management plan
- To reduce repeat victimisation
- To improve agency accountability
- Improve support for staff involved in high risk DV cases

Relax, go ahead and read. No one on this platform can tell you're a wife beater. You don't look like someone who would hit a woman. But then who does? Domestic violence is a crime committed by men from all walks of life. If you're abusing your partner, you should know that the Police no longer need her statement to make an arrest. If we have reasonable grounds, we will arrest you immediately. And, if you have left the scene, we will track you down. Remember, there are no longer any safe houses for men who commit domestic violence.



**METROPOLITAN
POLICE**

Working together for a better London

**“Honouring their
lives, learning
from their deaths”**



Working together for a safer London



DV Homicide Review

- To ensure all homicide reviews are conducted in a professional, open and honest way – by effective inter-agency working
- Establish lessons learnt
- To improve inter-agency working and better safeguards
- To use performance and data analysis to identify Trends and patterns of offending to inform multi-agency practices
- To work towards the implementation of Section 9 Domestic Violence, Crime and Victims Act 2004.



Partnerships

– we can't operate in isolation!

- NGOs - strategic and operation are key to success
- IDVA (Havering Case Study)
- ISVA / Havens / SARCs
- SDV Courts (4 London)



METROPOLITAN
POLICE

Working together for a safer London

The Future...



**METROPOLITAN
POLICE**

Working together for a safer London

‘Accountability and
partnership working’

Is the
only way forward.....?



METROPOLITAN
POLICE

Working together for a safer London

Reinforcing our priorities.....

- Continuous aspiration to be better
- Back to basics! Positive action/arrest/can do
Attitude / assess & manage risks
- Joined up partnership working
 - Information sharing – eradicate risk aversion
 - mutual respect and understanding
- Criminal Justice partnership joint performance




METROPOLITAN
POLICE

Working together for a safer London



ALSO BREAKS NOSES, JAWS AND RIBS

DOMESTIC VIOLENCE IS A SERIOUS CRIME.
THE MET CAN NOW PURSUE ABUSERS EVEN
WITHOUT EVIDENCE FROM THE ABUSED PARTNER..

 If you know Domestic Violence is going on –
help us break the appalling routine of violence.

CALL YOUR LOCAL POLICE STATION.



HEART BREAKER

HERE'S NEWS FOR DOMESTIC VIOLENCE ABUSERS: YOUR PARTNER'S SILENCE NO LONGER PROTECTS YOU.



Working for a safer London



Project Umbra (revised)

- Led by a Chief Officer
- Four strands of work
 - **Advocacy & support**
 - **Children affected by domestic violence**
 - **Offender management**
 - **Domestic Violence Homicide Review**
- **Within Serious Violence Strategy / VAW strategy**



**METROPOLITAN
POLICE**

Working together for a safer London

Key messages

- **Training ! Training ! Training !**
- **Supervision, accountability and compliance**
- **Improved risk identification**
- **Risk assessment not using SPECSS+ = flawed**
- **assessments and inappropriate intervention**
- **Clear guidance required and addressed through**
- **Standard Operating Procedures**
- **Strong communication strategy**
- **Criminal Justice System must be involved from outset**

When was the last time you told your girlfriend you loved her? Was it just after you nearly killed her? Most days you're charming and affectionate to your partner. Then suddenly, you become a violent stranger. She doesn't know which one of you will come home. And that's how you control her, isn't it? If you're abusing your partner, you should know that the Police no longer need her statement to make an arrest. If we have reasonable grounds, we will arrest you immediately. And, if you have left the scene, we will track you down. Remember, there are no longer any safe houses for men who commit domestic violence.

To do nothing

is not an

OPTION!

Police Officers bare

a

•Professional, & a
Moral responsibility



**METROPOLITAN
POLICE**

Working together for a safer London

‘The world is a dangerous place to live in not because of the people who do evil things, but because of the people who know about it but do nothing to stop it’ (Canter, 2003).

Contact Details

Gerry Campbell
Violent Crime Directorate
New Scotland Yard

Gerry.Campbell@met.police.uk

+44 7768 504 220

+44 20 7230 1430



**METROPOLITAN
POLICE**

Working together for a safer London