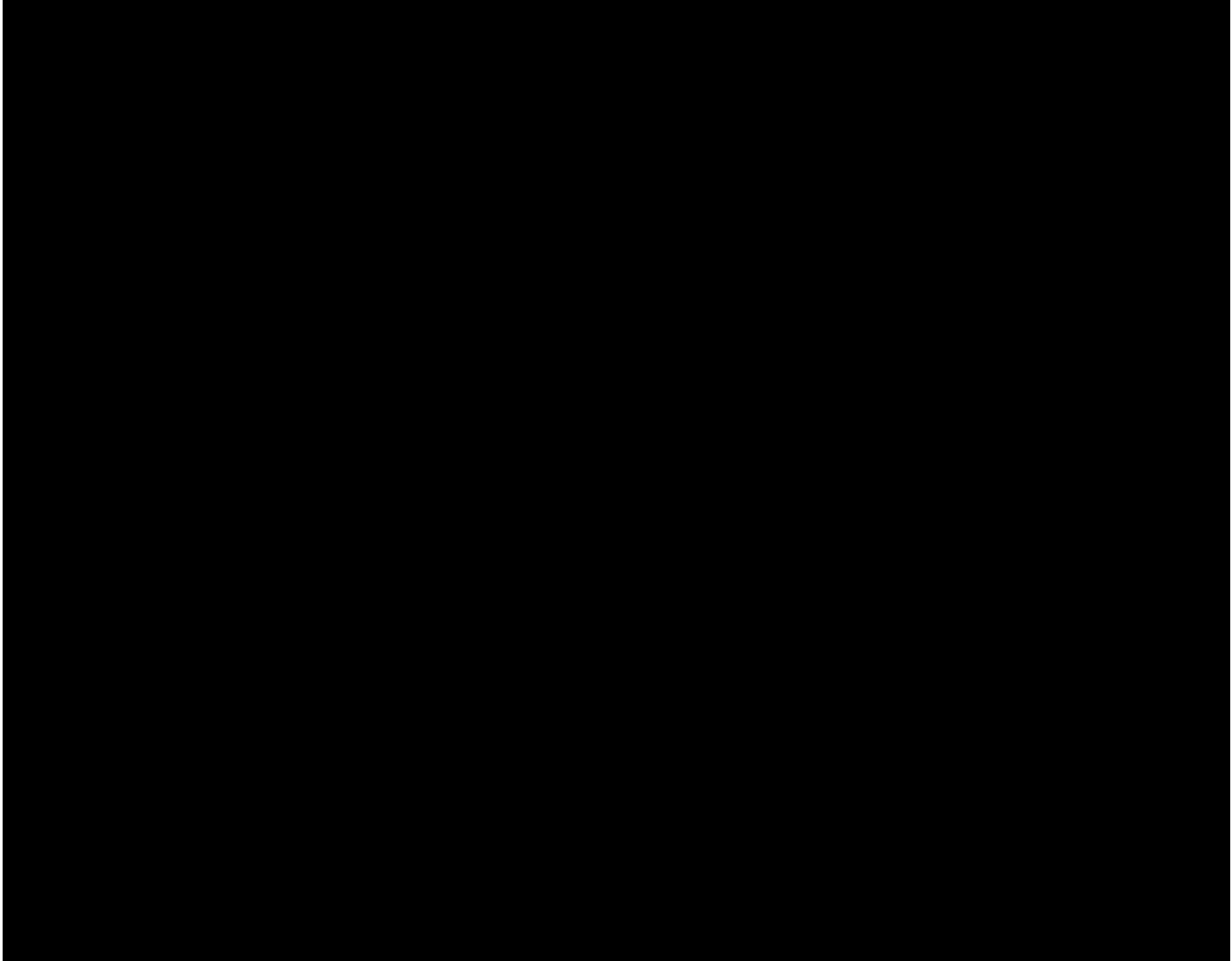


# Alcohol Harm Reduction in Rural New Zealand

Sergeant Tony Woodbridge  
New Zealand Police



# Policing and Alcohol



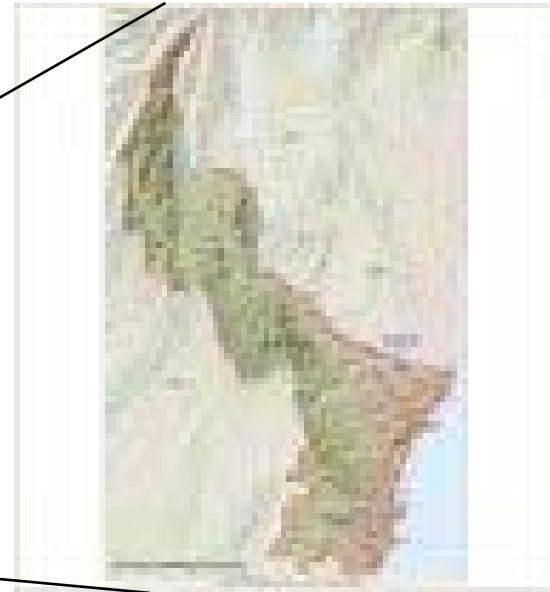
# Content

- Who am I?
- The Waitaki District – Snap Shot of Rural New Zealand
- Alcohol in our Community
- Problems Identified in our Community
- A Working Collaboration
- Personalising the Problem
- Initiatives Introduced to our District
- Success Stories
- Where to from here?

# Who am I?



# The Waitaki District



# Oamaru...A Beautiful Place!



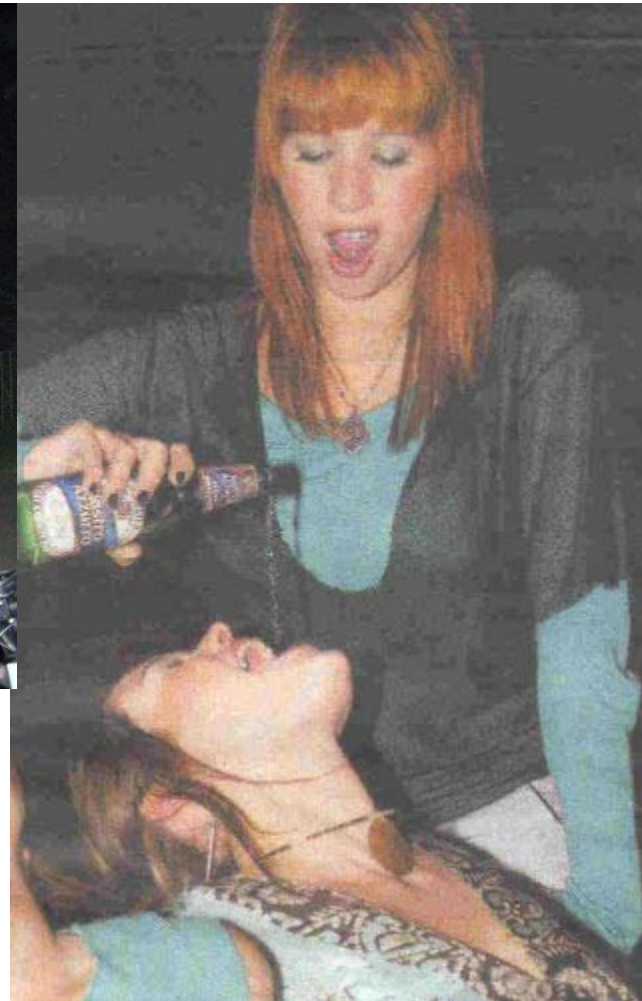
# Alcohol in our Community





**What is on our streets and on  
our roads**

# Problems Identified







# A Working Collaboration





Traffic Crashes  
1 in 5

Traffic Offences  
1 in 4

Sexual Offending  
1 in 5  
(1 in 2 not known)

Property Offences  
1 in 4



Violence  
1 in 3

18% of Police  
Budget

Drugs & Anti-Social  
Offences  
1 in 2

Serious Violence  
1 in 2

Victims  
1 in 3

Family Violence  
1 in 3



# Personalising the Problem



# Initiatives Introduced



# Initiatives Introduced

- Questioned by the community
- Public Meetings
- Working with the community.
- Drink Driving D.V.D. at Court.
- Talking Circuit at Schools. Personalizing Alcohol.
- Getting Media assistance
- Party Packs. (Get out of Jail Free cards)
- Contract With Rugby Club Team.
- Firm but fair approach





# Success Stories!

- Mattie Horn.
- Josh Julius.
- No alcohol related Deaths in the Waitaki involving Youth in last two years.
- Getting funding for Alcohol Programs.
- Strengthened networks.
- Industry Working with the Community.

And Thanks to our Aussie Mates!

